

#SUCCESSBOOSTERCOSTREDUCER



**Our strong boys**

**... now even stronger!**

Master-PUR Inline  
Master-PUR Performance

 **MASTERFLEX**  
Connecting Values

## These are the areas of application



## The right PU transport hose leads to more success through lower costs, more time, and more safety

Whether in the initial consultation, the distribution of the product or in service in general: the **quality** of a transport hose is crucial! Only a high-quality hose proves itself in use and thus leads to long-term customer satisfaction. But how can a hose be better than others? Through its properties! If many good properties are combined in a hose, it becomes a superior product.

This is exactly how the **Master-PUR Inline** and the **Master-PUR Performance**, with their numerous superior properties, will leave none of the customer's wishes unfulfilled. The **Master-PUR Inline** and the **Master-PUR Performance** fulfil all the added values that are important for an optimal production process: More success through lower costs, more time savings, and more safety!

Thanks to our **#SuccessBoosterCostReducer** - the **Master-PUR Inline** and **Master-PUR Performance** - you finally have time again for the important things.

## Areas of Application

- Transport hose for problematic conveyed goods, e. g. sand, gravel, grain, granulates with GRP content
- Transport hose for handling and conveying systems
- Wherever easy-to-clean surfaces are required
- Wherever smooth and edge-free transitions/connections are important in the conveying process
- Suction and transport hose for extremely abrasive solids
- Delivery hose for cleaning in glassworks, mineral processing plants, steelworks, quarries, shipyards and port facilities, cement works, and flat roof graveling
- Other conveying and loading equipment

# Master-PUR Inline

PU Suction hose and Transport Hose, extremely abrasion resistant, vacuum proof, seamless, very smooth inner lining, antistatic, surface resistance  $< 10^9$  Ohm, microbe-resistant



## Material

- spiral:** spring steel wire
- wall:** pure polyurethane
- wall thickness:** min. 5.5 mm
- inner lining:** application-optimised polyurethane 60° Shore A

## Temperature Range

- -40 °C to +90 °C
- peaks to +125 °C

## Available on request

- Available on request in other lengths, sizes

## Properties

- flexible
- extremely abrasion-resistant, super strong PU inliner
- completely seamless and smooth inner wall, therefore, with optimal flow properties
- microbe-resistant
- high vacuum and good pressure resistance
- permanently antistatic, surface resistance  $R_o < 10^9$  Ohm, measured according to DIN EN ISO 8031
- good resistance to chemicals, oil and petrol
- high tensile and tear strength
- generally good UV and ozone resistance
- Configurable as a hose system with digital interface for compatibility with the AMPIUS® app
- TRGS 727 and ATEX 2014/34 EU
- free of halogens and plasticisers

# Master-PUR Inline

DN	Operating pressure bar	vacuum bar	bend radius* mm	outer-Ø mm	weight/m kg	article no.**	max. production length m
38	4.65	0.94	150	56	1.72	000195:38:x	20
40	4.5	0.94	160	58	1.79	000195:40:x	20
50	4.16	0.94	196	69	1.65	000195:50:x	20
51	4.125	0.94	200	70	1.64	000195:51:x	20
65	3.9	0.94	300	85	2.02	000195:65:x	20
75	3.75	0.94	390	96	3.31	000195:75:x	20
76	3.75	0.94	400	97	3.44	000195:76:x	20
80	3.375	0.94	410	99	2.69	000195:80:x	20
100	3.03	0.94	428	120	4.24	000195:100:x	20
102	3	0.94	430	122	4.39	000195:102:x	20
115	2.6	0.94	440	136	4.9	000195:115:x	15
125	2.45	0.94	448	146	5.56	000195:125:x	15
127	2.4	0.94	450	148	5.69	000195:127:x	15
150	1.95	0.94	600	175	7.3	000195:150:x	15
152	1.95	0.94	600	175	7.3	000195:152:x	15
175	1.8	0.77	700	198	7.48	000195:175:x	10
180	1.65	0.75	700	202	7.68	000195:180:x	10
200	1.35	0.67	800	223	10.01	000195:200:x	10
203	1.35	0.67	800	227	10.2	000195:203:x	10
250	0.95	0.5	1000	271	12.07	000195:250:x	10
254	0.95	0.5	1000	275	12.1	000195:254:x	10

All data refers to a medium and ambient temperature of +20 °C.

\* Refers to the inner hose lining

\*\* Please replace "x" with your desired hose length

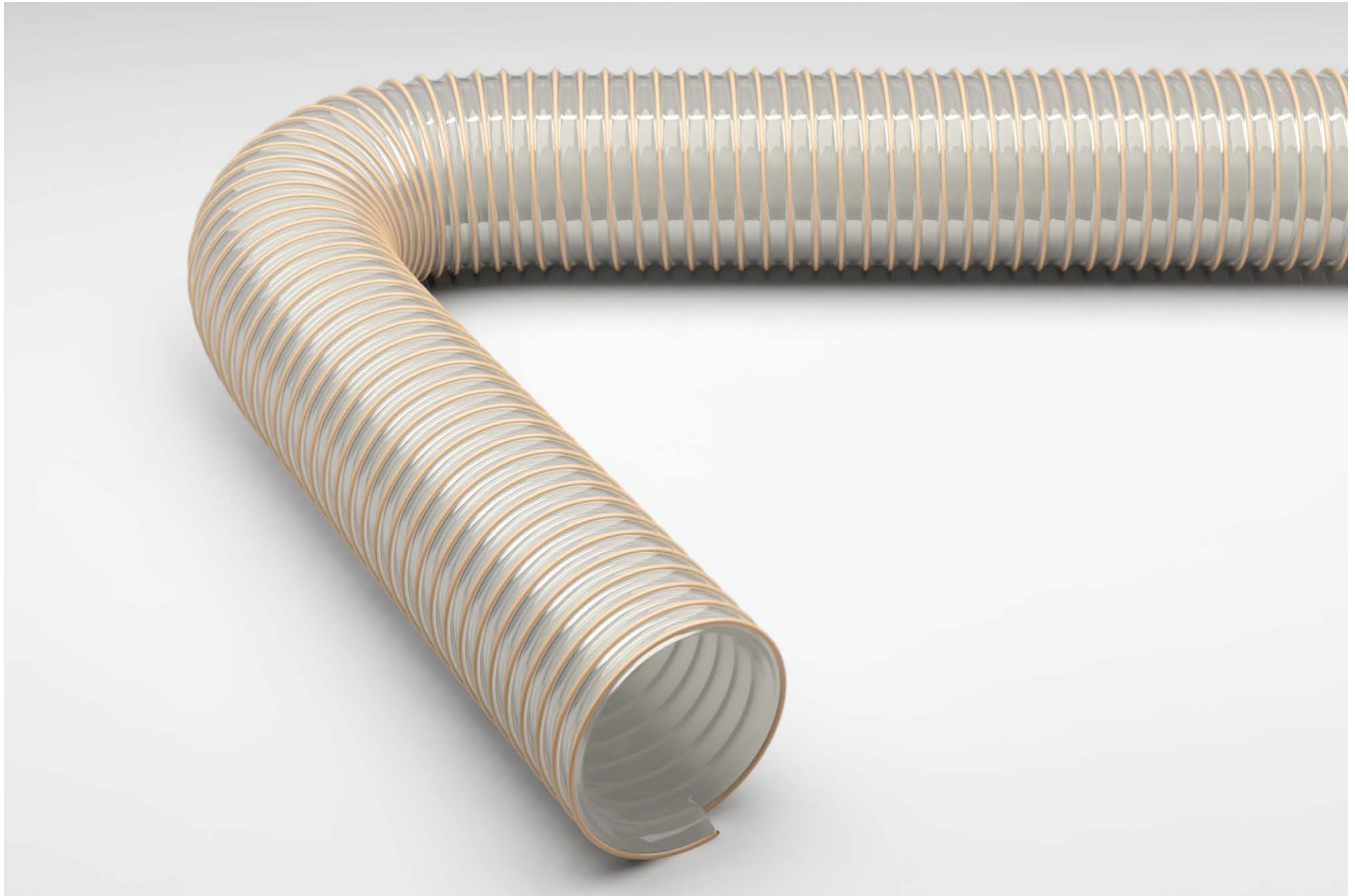
Subject to technical changes and colour deviations.

## User benefits:

- Due to its completely smooth and dead-space-free inner surface, the **Master-PUR Inline** offers optimum flow conditions with minimum flow losses.
- Particularly noteworthy is the enormous service life of the **Master-PUR Inline**: Due to the special properties of the material, the **Master-PUR Inline** has a significantly higher abrasion resistance compared to conventional hoses made of thermoplastic polyurethane. The service life of the hose is significantly increased as a result.
- In addition to the extreme abrasion resistance, the **Master-PUR Inline** is extremely robust, while being low weight, in comparison with standard spiral hoses. The **Master-PUR Inline** also has excellent pressure and vacuum resistance.
- In addition, the hose is antistatic and microberesistant.
- No medium residues remain in internal edges or pores.

# Master-PUR Performance

PU suction hose and transport hose, extremely abrasion-resistant and vacuum-proof, seamless smooth inner lining, antistatic and microbe-resistant, surface resistance  $< 10^9$  Ohm



## Material

<b>spiral:</b>	spring steel wire
<b>wall:</b>	pure polyurethane
<b>wall thickness:</b>	min. 2.5 mm
<b>inner lining:</b>	application-optimised polyurethane 60° Shore A

## Temperature Range

- -40 °C to +90 °C
- peaks to +125 °C

## Available on request

- Available on request in other lengths, sizes

## Properties

- extremely abrasion-resistant, super strong PU material
- completely seamless and smooth inner wall, therefore, with optimal flow properties
- microbe-resistant
- flexible
- high vacuum and good pressure resistance
- permanently antistatic, surface resistance  $R^0 < 10_9$  Ohm, measured according to DIN EN ISO 8031
- TRGS 727 and ATEX 2014/34 EU
- free of halogens and plasticisers
- good resistance to chemicals, oil and petrol
- high tensile and tear strength
- generally good UV and ozone resistance

# Master-PUR Performance

DN	Operating pressure bar	vacuum bar	bend radius* mm	outer-Ø mm	weight/m kg	article no.**	max. production length m
38	4.35	0.94	130	50	0.8	000210:38:x	20
40	4.25	0.94	135	52	0.8	000210:40:x	20
45	4.12	0.94	155	57	1	000210:45:x	20
50	4.02	0.94	168	65	1.17	000210:50:x	20
51	4	0.94	170	66	1.2	000210:51:x	20
55	3.8	0.94	175	72	1.3	000210:55:x	20
60	3.7	0.94	185	77	1.5	000210:60:x	20
65	3.5	0.94	190	82	1.6	000210:65:x	20
75	3.18	0.94	245	92	1.87	000210:75:x	20
76	3.15	0.94	250	93	1.9	000210:76:x	20
80	2.9	0.94	270	97	2.1	000210:80:x	20
90	2.7	0.94	285	107	2.4	000210:90:x	20
100	2.53	0.94	297	117	2.58	000210:100:x	20
102	2.5	0.94	300	119	2.6	000210:102:x	20
115	2.3	0.94	325	132	3	000210:115:x	15
125	2.05	0.94	345	142	3.25	000210:125:x	15
127	2	0.94	350	144	3.3	000210:127:x	15
140	1.8	0.94	370	154	3.46	000210:140:x	15
150	1.54	0.94	396	167	3.67	000210:150:x	15
152	1.5	0.94	400	169	3.7	000210:152:x	15
175	1.1	0.7	770	190	4.6	000210:175:x	10
180	1	0.68	780	195	4.7	000210:180:x	10
200	0.8	0.55	840	215	5	000210:200:x	10

All data refers to a medium and ambient temperature of +20 °C.  
 \* Refers to the inner hose lining  
 \*\* Please replace "x" with your desired hose length  
 Subject to technical changes and colour deviations.

## User benefits:

- Due to its completely smooth and dead-space-free inner surface, it offers optimal flow conditions with minimal flow losses. The pleasant side effect: energy consumption and costs can be reduced by optimising the flow.
- No medium residues remain on internal edges or pores.
- Thanks to the optimised design of the hose profile, the **Master-PUR Performance**, offers a high degree of flexibility even in confined spaces and is comfortable to handle.
- Due to the properties of the material, the **Master-PUR Performance** has twice the abrasion resistance of conventional hoses made of thermoplastic polyurethane (TPU). The service life of the hose is significantly increased.
- Compared to standard spiral hoses, the hose has good pressure and vacuum resistance. In addition, the hose is microbe-resistant and antistatic. Manufactured according to the technical rule TRGS 727 and ATEX 2014/34 EU to avoid ignition hazards due to electrostatic charges. Details according the certificate on our homepage.

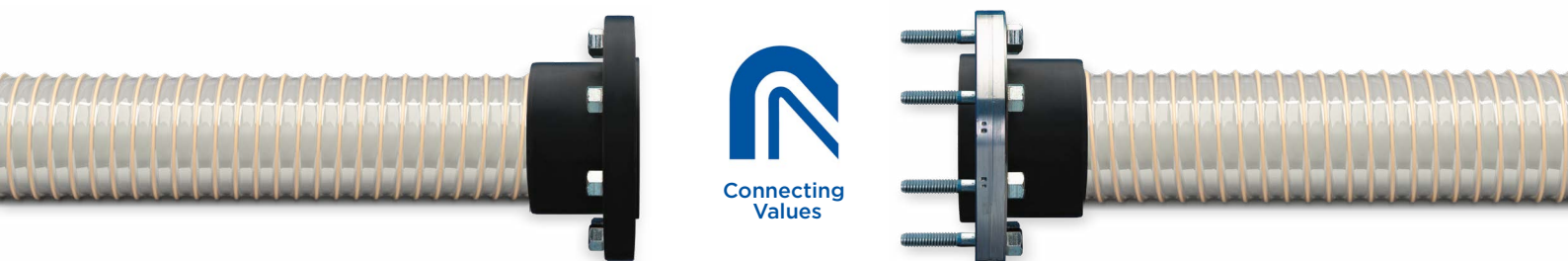
# The integration of our hoses into your system

For our strong guys, we already offer numerous standard connection elements customary in the industry, whether firmly cast-on flanges for absolutely tight connections or screwed clamping shells for quick and easy changing - we offer the right solution for every connection system.

Even for special installation situations or particularly high demands on the products, **Masterflex** provides you with the right solution. Whenever standard components can no longer be used, we develop and we produce special, individualized solutions with customised products.

The connection points must be able to withstand the extreme demands of highly abrasive media. Our universal connection options not only ensure easy handling, but also have a cost-optimising effect.

**Our connections are distinguished by the absolute diversity, availability, high quality standard, and performance of our systems.**



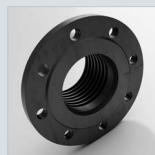
## Our standard connections



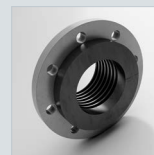
Combiflex  
PU Cone Flange,  
screwable/fix



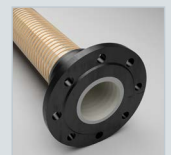
Combiflex  
PU Threaded  
Sockets



Combiflex PU  
Fixed Flange



Combiflex PU  
Swivel Flange



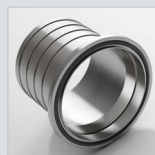
Combiflex  
Cast-on PU  
Fixed Flange



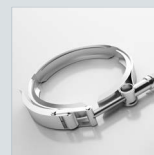
Combiflex  
Cast-on PU  
Swivel Flange



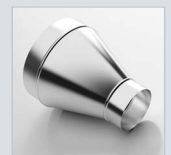
Combiflex Metal  
Threaded  
Sockets



Cone Flange  
with Metal  
Sockets



Quick-Fix  
Clamp for  
Cone Flanges



Hose Reducer,  
symmetrical



PU Hose Sleeve



Clamp Collars,  
screwed



Hose Clamp  
with Bolts



Hose Connecto



Masterflex SE  
Willy-Brandt-Allee 300  
45891 Gelsenkirchen · Germany  
Tel +49 209 97077-0  
Fax +49 209 97077-33  
[www.masterflex.de](http://www.masterflex.de)  
[info.masterflex@masterflexgroup.com](mailto:info.masterflex@masterflexgroup.com)  
A MASTERFLEX GROUP COMPANY

 **MASTERFLEX GROUP**

