



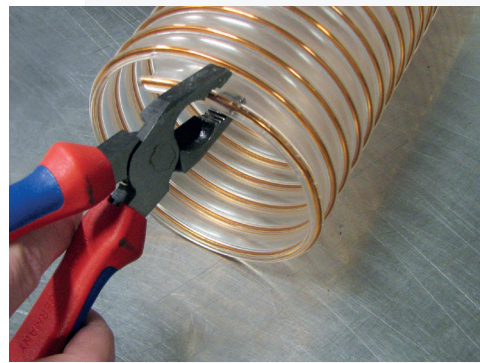
Instruction Manual: Sealing Screw Connections

Sealing Screw Connections

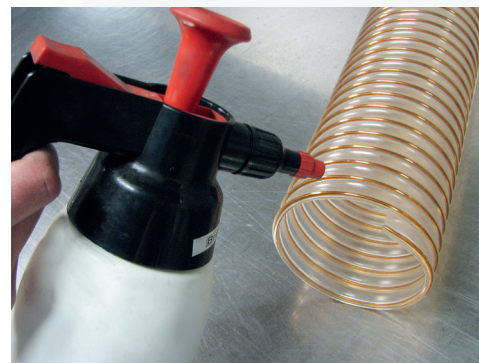
Instructions for sealing screw connections

In the following instructions manual, we would like to demonstrate how you can easily and quickly seal your PU-hoses professionally with the corresponding Masterflex connectors. For the best results, please follow the instructions as they are described here.

1. Carefully bend the end of the hose spiral



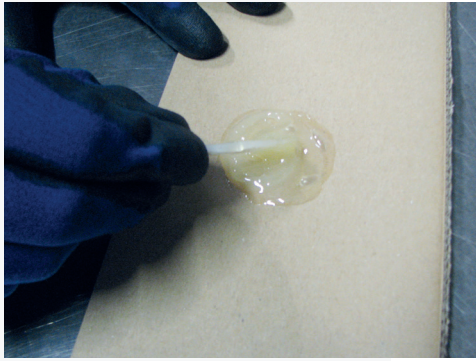
2. Clean and grease the end of the spiral using a cleaning agent and a fluff-free cloth



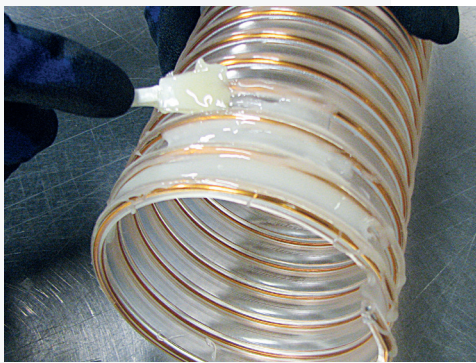
3. Clean the inner thread of the PU screw connector thoroughly and remove any dirt or grease



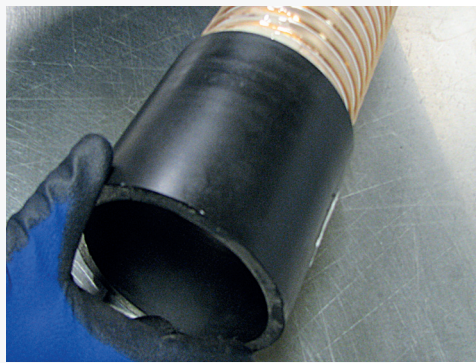
Sealing Screw Connections



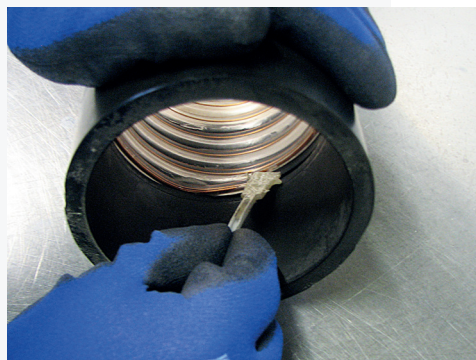
4. Prepare the adhesive according to the instructions included. We recommend the "Uhu Endfest 300" adhesive. This can also be included in your order, please contact our Sales, if required



5. Apply the adhesive to the outer wall of the hose across the surface of 3 spiral-gradients



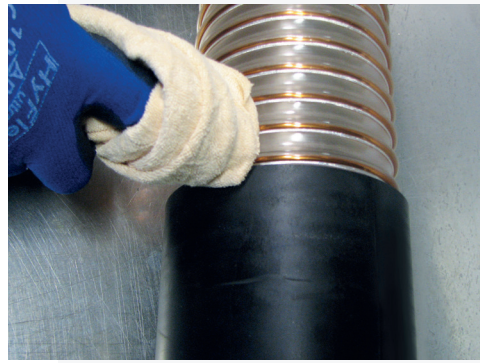
6. Carefully and evenly screw the PU part onto the end of the hose, which has just been prepared with the adhesive



7. Brush the intersection of the internally located hose end and the the PU connector with sufficient adhesive

Sealing Screw Connections

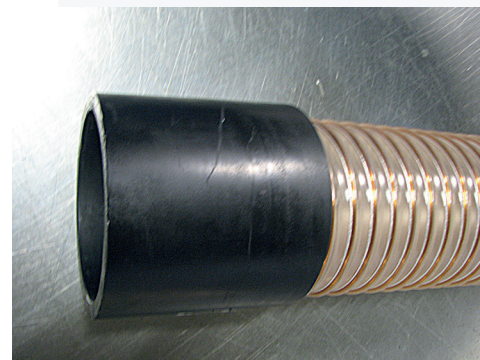
8. Remove any superfluous adhesive from the outer side of the PU connector



9. Repeat this process on the inside of the connector and hose



10. According to the instructions provided, let the adhesive react and set



Please note that, in order to ensure maximum safety and to avoid any risk of electro-static ignition hazards, the correct and professional grounding of the hoses during the installation is extremely important. For this, please refer to and follow the instruction manuals for the grounding of CLIP-Hoses and PU-hoses. If you require any further information or have any questions, please contact us directly - we're happy to help!

For more information, please contact our Sales team at:

Masterflex SE
Willy-Brandt-Allee 300
45891 Gelsenkirchen, Germany
Tel. +49 209 97077-0
Fax +49 209 97077-33
www.masterflex.de
info@masterflex.de

A MASTERFLEX GROUP COMPANY